



STUDIO  
**Borealis**

STUDIO GUIDE | 2024

## HELLO THERE

We can't wait to witness the amazing work you'll produce at Studio Borealis! This guide is your handy reference for any questions, making sure your shoot is both stress-free and fantastic.





## ACCESS

To ensure a smooth entry, we'll provide clear instructions on how you'll access the studio prior to your session. We'll either meet you there personally to let you in, or we'll provide a code for you to enter independently using the keybox.

## LOCATION

Our studio is located in Fargo, North Dakota, just off Interstate 29, close to Thunder Road Family Fun Park. It's a roomy white "shop condo" located directly off 30th Ave S. You can find us at 3845 Thunder Road S., Fargo, ND 58104.

## PARKING

There are three parking spots in front of our building and a large parking lot to the west.

## STUDIO LAYOUT & USAGE

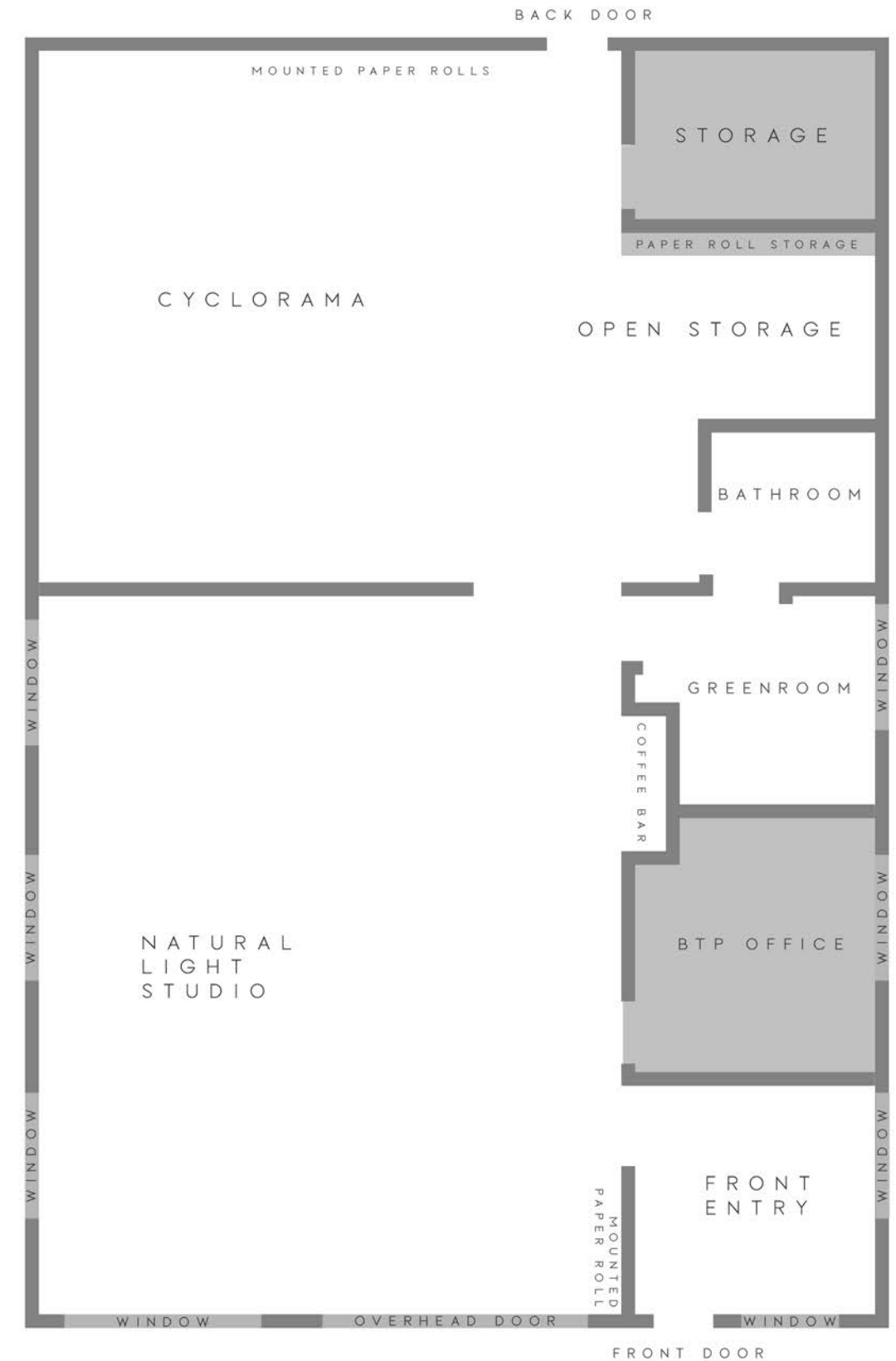
When preparing for your photo shoot, remember that you have access to all the areas shown in white. If you plan to use Paper Rolls, please note a \$25 rental fee applies.

However, the wall-mounted rolls can be used at no cost, as long as they are not fully rolled out and remain undamaged.

Except for rented paper backdrops, all equipment in the open storage area is available for use, including stands, reflectors, umbrellas, and items in white drawer units.

In the Coffee Bar section, use nearly everything except items on the left side of the refrigerator (members only). Wash and store any used dishes, and check the top drawer for extra Nespresso pods and tea options.

Regarding decor, everything within white areas is for photography purposes. Integrate decor, shelving, plants, etc., and return them to their original positions after your session.





## NATURAL LIGHT STUDIO

The natural light studio is 945 sq feet with modern concrete floors and warm white walls.

The space features a large southwest-facing overhead door and companion window. There are three additional windows on the northwest wall.

The room's light is ever-changing, and the best time to shoot fluctuates between seasons. Typically, the space is well-lit from morning through late afternoon in the summer and from mid-morning to mid-afternoon in the winter.

## CYCLORAMA

Our bright white, 700 sq ft Cyclorama boasts a 30-inch curve, wrapping around a corner and extending 11+ feet up for seamless backdrop magic.

There is no ambient light in this part of the studio, allowing you to craft your vision the way you see fit.

In addition, there is also a neutral grey wall with four colorful background paper rolls. These colors change seasonally.

To keep the cyclorama in pristine condition (and to avoid any repair or repainting fees), we recommend you read our Cyclorama Rules.



SCAN ME



## COFFEE BAR

Brew up inspiration with our on-site coffee bar. Coffee options include freshly ground and brewed beans or Nespresso pods. Tea connoisseurs will find a teapot and select flavors ready to enjoy. Refrigerated refreshments are available in the mini fridge (right side only).



## WC & GREEN ROOM

Next to the private restroom (WC) is the green room, serving as both a fitting room for your clients and a versatile makeshift office space. Inside, you'll discover a large mirror, a garment rack, and even an iron and lint roller for any last-minute touch-ups. Additionally, there's a desk ready for you to use as a workspace between shoots.

## PROPS + EQUIPMENT INCLUDED

Various Chairs, Benches + Stools

White Leather Sofa

Large White Cube

Desk w/ wheels

Decor Items

Live Plants

Bluetooth Speaker

Magnetic Board + Letters

Appleboxes

4 C-Stands (2 w/wheels)

Crossbar

Various Collapsible Light Stands

Traditional & Parabolic Umbrellas (w/ diffusers)

12x12 Panel Diffuser

Reflectors

Tripod + Monopod

Tape, including Gaffer Tape

C-Clamps + Clothespins

Rolling Clothes Rack

Wardrobe Mirror





## BEFORE YOUR SHOOT

You may arrive 10 minutes early for your shoot, but if there is a shoot before yours, we kindly request you to wait to enter until your scheduled time.

If you are accessing the studio via the keybox, we ask that you wait until the photographer before you has vacated the space completely.



## AFTER YOUR SHOOT

To ensure a fantastic experience for all photographers, we kindly request that you leave the space in the same condition you found it. Cleaning supplies are readily available in the open storage area and under the coffee bar sink. Feel free to use them if needed. Please return all props, furniture, and equipment to their original locations, dispose of trash in the bin, take all personal belongings with you, and turn off the lights.

If you accessed the studio via the keybox, kindly lock up following our instructions. If another photographer is scheduled to use the studio after your session, they will need to access the space using the keybox.

## STUDIO POLICIES

Violating studio policies may lead to additional charges and/or limitations on future access.

- Treat the studio and fellow users with kindness and consideration.
- Use of the studio is for photography/videography purposes only. No events.

- No drugs, alcohol, smoking, or vaping inside the studio or surrounding areas.
- Refrain from using glitter, confetti, or anything excessively messy.
- Do not open the overhead door without prior permission.
- Avoid moving heavy equipment or furniture without assistance.
- Return all props, gear, and furniture to their original locations.
- Leave the studio as clean as you found it, tidy any mess and dispose of trash in designated bins.
- If accessing the studio via keybox, ensure the door is securely locked and the key is returned to its designated area.
- Domestic pets are allowed, with certain restrictions. Please refer to our pet guidelines by scanning the QR code for more information.



SHOOT & CREATE